

# MIT Bluewater

*Sailing Aboard Mashnee*

*IAP 2023*

# MIT Bluewater Racing & Cruising

*MASHNEE - 1902 Buzzards Bay 30*

*About Me*

*Where we sail*

*How to get aboard*

# MIT Bluewater IAP Sessions

Topic	Date	Location
Bluewater Crew	Thursday 1/12	Zoom (same link)
Weather	Tuesday 1/17	66-144
Racing	Thursday 1/19	66-144
Safety at Sea	Tuesday 1/24	66-144
Celestial Navigation	Thursday 1/26	66-144
Navigation Part 1	Tuesday 1/31	66-144
Navigation Part 2	Thursday 2/2	66-144



# MASHNEE in 2004







# The MASHNEE Project pt. 1





# The MASHNEE Project pt. 2



# About Me...

- MIT PhD Candidate in Building Technology
- MIT Bluewater Skipper since 2021
- My passion is sailing and teaching sailing
- I grew up on Long Island sound racing dinghy's and big boats
- MIT Bluewater has provided me:
  - Built my skills as a crew member, boat mechanic, & skipper
  - Experience cruising and racing from Boston to Maine



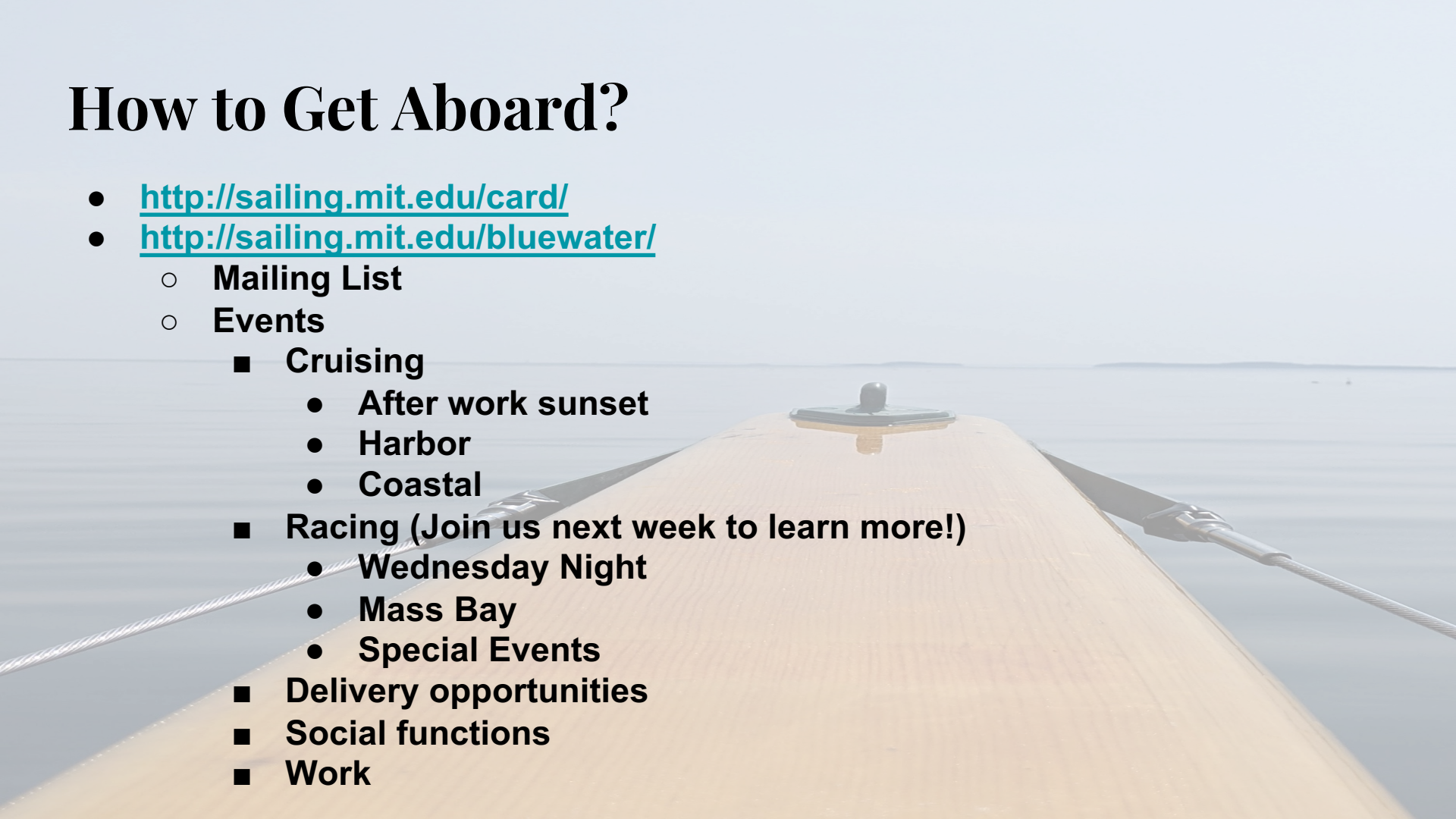
# Goals...

- **To get new faces aboard Mashnee**
- **Expose sailors to cruising and racing**
- **Build confidence on the water**
- **Strengthen on-water skills**
  - **Safety**
  - **Communication**
  - **Crewmanship**
- **Strengthen the MIT sailing community**



# How to Get Aboard?

- <http://sailing.mit.edu/card/>
- <http://sailing.mit.edu/bluewater/>
  - Mailing List
  - Events
    - Cruising
      - After work sunset
      - Harbor
      - Coastal
    - Racing (Join us next week to learn more!)
      - Wednesday Night
      - Mass Bay
      - Special Events
    - Delivery opportunities
    - Social functions
    - Work



# Where We Sail...

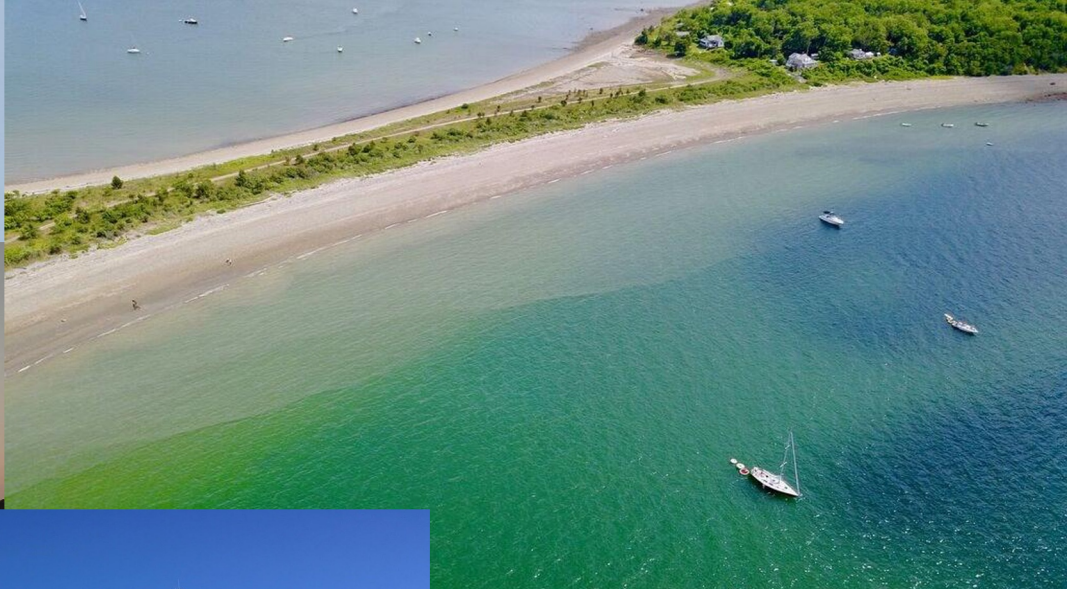
- **Boston Inner Harbor**
- **Boston Outer Harbor**
- **Boston Harbor Islands**
- **Mass Bay**
- **Marblehead / Gloucester**
- **New this year: Cape Cod**



# Where We Sail...

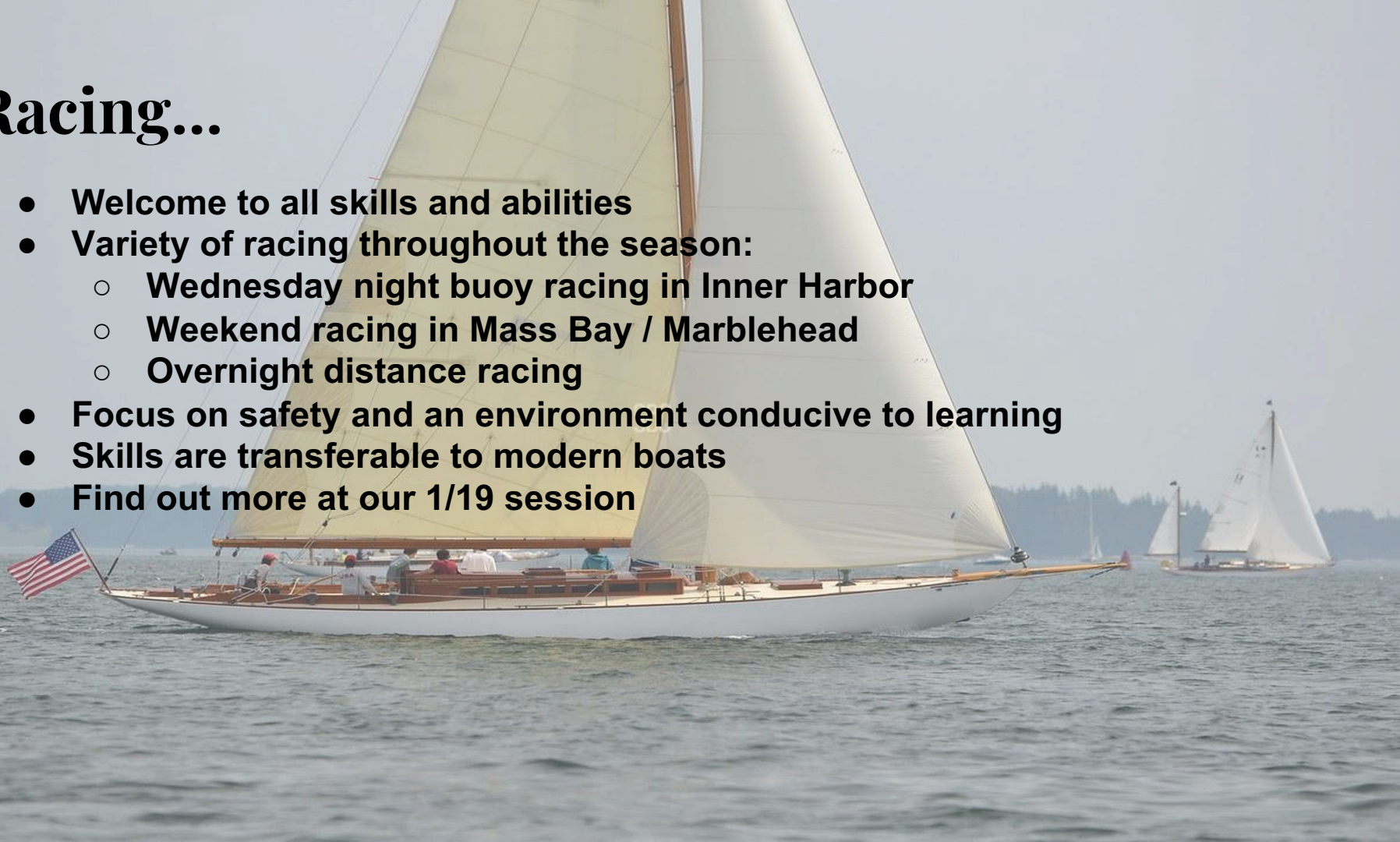


# Where We Sail...



# Racing...

- **Welcome to all skills and abilities**
- **Variety of racing throughout the season:**
  - **Wednesday night buoy racing in Inner Harbor**
  - **Weekend racing in Mass Bay / Marblehead**
  - **Overnight distance racing**
- **Focus on safety and an environment conducive to learning**
- **Skills are transferable to modern boats**
- **Find out more at our 1/19 session**







© BRUCE DURKEE 2021



© BRUCE DURKEE 2021





# Cruising...



- **Welcome to all skills and abilities**
- **Variety of cruising opportunities throughout the season:**
  - **After work / evening sails**
  - **Weekend sails to Marblehead or Gloucester**
  - **Deliveries - Local or Long distance**
  - **Maine**
- **Focus on safety and providing an environment that is conducive to learning and development**
- **Skills are transferable to modern boats and into racing**
- **A good place to start while working towards your Bluewater Crew Rating**
  - **Bluewater Crew are needed on every sail**
  - **A good way to utilize your developing skills**
  - **Find out more at our 1/12 session**













Questions?

